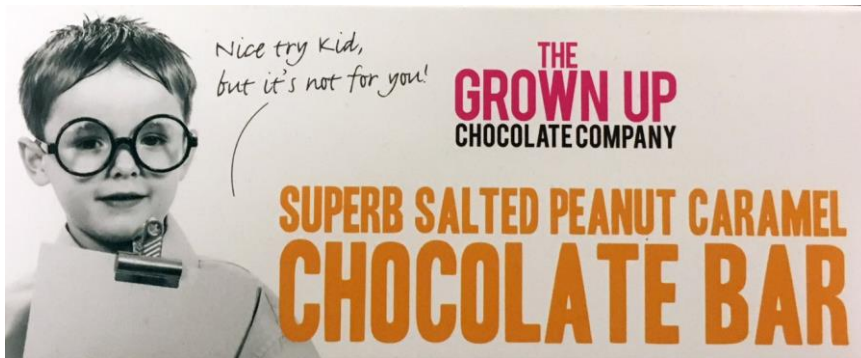


Booths Chocolate Lovers Hat Box

Booths Champagne Truffles



The Grown Up Chocolate Company - Salted Peanut Caramel Chocolate Bar



MILK CHOCOLATE BAR WITH PEANUTS AND CARAMEL.
INGREDIENTS: Milk Chocolate (41%) (Whole Milk Powder, Cocoa Butter, Cocoa Mass, Emulsifier: Soya Lecithin, Natural Vanilla Flavouring), White Chocolate (20%) (Sugar, Cocoa Butter, Whole Milk Powder, Emulsifier: Soya Lecithin, Natural Vanilla Flavouring), Peanut Praline (16%) (Peanuts, Sugar), Caramel (10%) (Sugar, Cream (Milk), Glucose, Butter (Milk), Salt), Roasted Salted Peanuts (6%) (Peanuts, Sunflower Oil, Salt), Chocolate Sprinkles (Sugar, Cocoa Mass, Fat-Reduced Cocoa Powder, Anhydrous Milk Fat, Emulsifier: Soya Lecithin, Natural Vanilla Flavouring).

Milk Chocolate contains: Cocoa solids 38% minimum, Milk Solids 21% minimum.
White Chocolate contains: Milk Solids 23% minimum.

ALLERGY ADVICE: For allergens, see ingredients in bold. May also contain other Nuts and cereals containing Gluten. Suitable for Veggie.

NUTRITIONAL INFORMATION:
Typical Values (Per 100g)

Energy	2291kJ / 550kcal
Fat	35.4g
of which saturates	16.4g
Carbohydrate	50.1g
of which sugars	44.5g
Fibre	3.7g
Protein	9.6g
Salt	0.4g

Best Before:

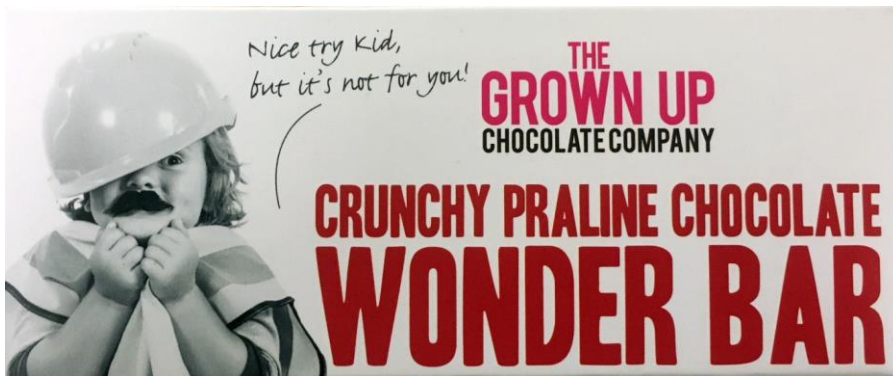
70g e
2 bars of joy

AGB

The Grown Up Chocolate Company: 3 Capital Place, Lovet Road, Harlow, Essex CM19 5AS United Kingdom

STORAGE: Please store in a cool dry place.

The Grown Up Chocolate Company - Crunchy Praline Wonder Bar



MILK CHOCOLATE BAR WITH PRALINE AND WAFER.
INGREDIENTS: Milk Chocolate (59.96%) (Whole Milk Powder, Cocoa Butter, Cocoa Mass, Emulsifier: **Soya Lecithin**, Natural Vanilla Flavouring), **Hazelnut Praline** (27%) (**Hazelnuts** Sugar), Caramelised Wafer (13%) (**Wheat** Flour, Sugar, Anhydrous **Milk Fat**, **Milk Sugar**, **Milk Proteins**, Salt, **Barley** Malt Flour, Raising Agent: Sodium Bicarbonate).
 Milk Chocolate contains: Cocoa solids 38% minimum, Milk Solids 21% minimum.
ALLERGY ADVICE: For allergens, see ingredients in **bold**. May also contain **Peanuts**, other **Nuts** and cereals containing **Gluten**. Suitable for Veggies.

NUTRITIONAL INFORMATION:	
Typical Values (Per 100g)	
Energy	2268kJ 543kcal
Fat	31.4g
of which saturates	14.9g
Carbohydrate	58.9g
of which sugars	50.1g
Fibre	2.0g
Protein	7.2g
Salt	0.1g

Barcode: 5 060241 060015 >

Best Before:

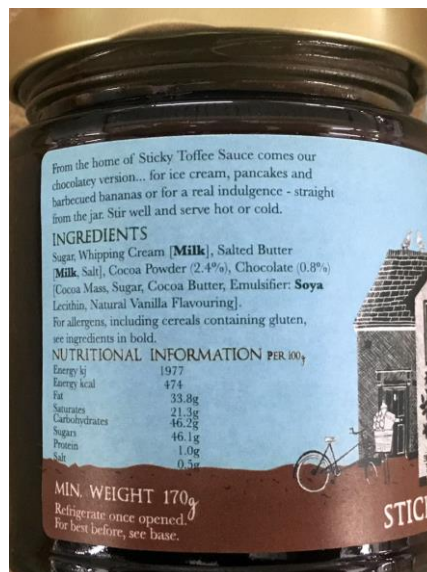
70g e
2 bars of joy

The Grown Up Chocolate Company: 3 Capital Place, Lovet Road, Harlow, Essex CM19 5AS United Kingdom

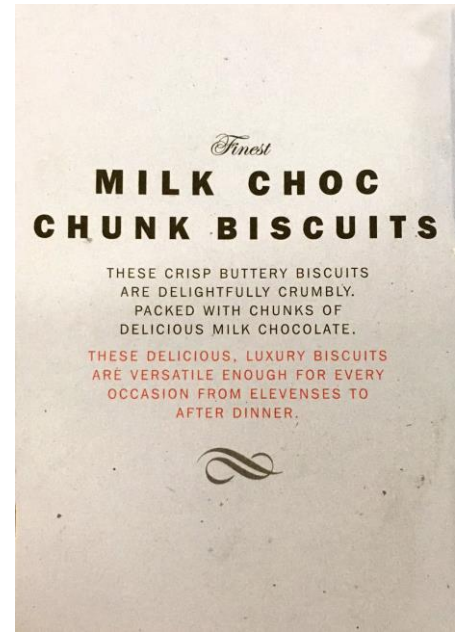
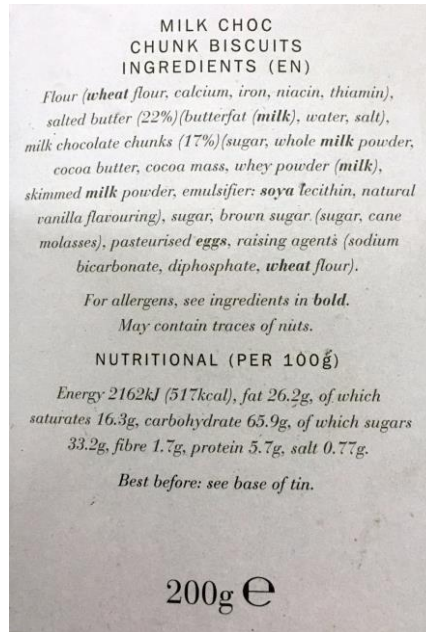
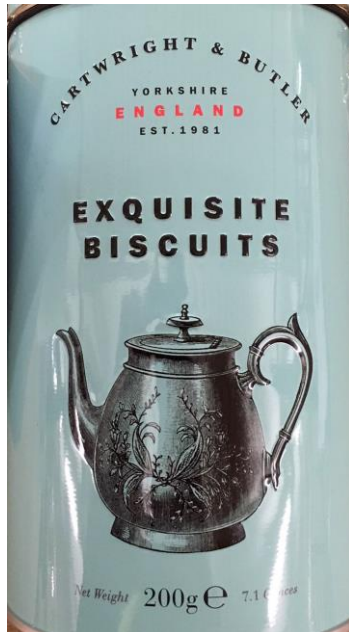
STORAGE: Please store in a cool dry place.

BGE

Cartmel Sticky Chocolate Sauce



Cartwright & Butler Chocolate Chunk Biscuits



Seggiano Crunchy Chocolate Hazelnut Organic Spread



Booths Anglesey Sea Salt Thins



BOOTH'S
MILK CHOCOLATE & ANGLESEY SEA SALT THINS

MILK CHOCOLATE FLAVOURED WITH SEA SALT

Ingredients Sugar, Whole **Milk** Powder, Cocoa Butter, Cocoa Mass, Anglesey Sea Salt, Emulsifier: **Soya** Lecithin, Natural Vanilla Flavouring.

Milk Chocolate contains Cocoa Solids 35% minimum, **Milk** Solids 21% minimum.

Allergy Advice For allergens, see ingredients in **bold**. May contain nuts.

Suitable for Vegetarians.

Storage Store in a cool, dry place away from strong odours and sunlight.

Nutritional Information

Typical Values	Per 100g	Per Chocolate
Energy	2313kJ / 553kcal	173kJ / 41kcal
Fat	34.9g	2.6g
of which Saturates	21g	1.6g
Carbohydrates	50.3g	3.8g
of which Sugars	49.1g	3.7g
Fibre	2.8g	0.2g
Protein	7.5g	1g
Salt	0.63g	0.05g