

# Booths Luxury Hamper

## Booths Breakfast Tea Bags

BOOTHS

# BREAKFAST TEA

100 TEA BAGS

A full bodied invigorating tea blended from  
Kenyan, Indian and Sri Lankan leaves

BOOTHS  
**BREAKFAST  
TEA**

100 TEA BAGS

**For the perfect brew**

Place one tea bag in a cup or mug. Pour on freshly boiled water. Brewing time is a matter of taste but we recommend leaving the tea to infuse for 3-5 minutes. Add milk or sugar to taste.

Specially selected and packed for  
E H Booth & Co. Ltd  
Preston, PR2 5BX  
[www.booths.co.uk](http://www.booths.co.uk)

BOOTHS  
**BREAKFAST  
TEA**

100 TEA BAGS

**Ingredients**  
100% Black Tea.

**Country of origin**  
Product of more than one country.

**Storage**  
Tea should be kept in a cool, dark, dry container that is airtight.  
Suitable for Vegetarians and Vegans.

This product should reach you in perfect condition. If it does not, please return to Customer Services at your nearest Booths store.  
For Best Before End, see top of pack.

250g e



100% Certified Tea.

## Booths Peppermint Fuso

BOOTHS  
**PURE  
PEPPERMINT**

12 PYRAMID INFUSIONS

**For the perfect brew**

Place one tea bag in a cup or mug. Pour on freshly boiled water. Brewing time is a matter of taste but we recommend leaving the tea to infuse for 3-5 minutes.

Specially selected and packed for  
E H Booth & Co. Ltd  
Preston, PR2 5BX  
[www.booths.co.uk](http://www.booths.co.uk)

24g e

BOOTHS  
**PURE  
PEPPERMINT**

12 PYRAMID INFUSIONS

**Ingredients**  
Peppermint Leaves 100%.

**Country of origin**  
Product of more than one country.

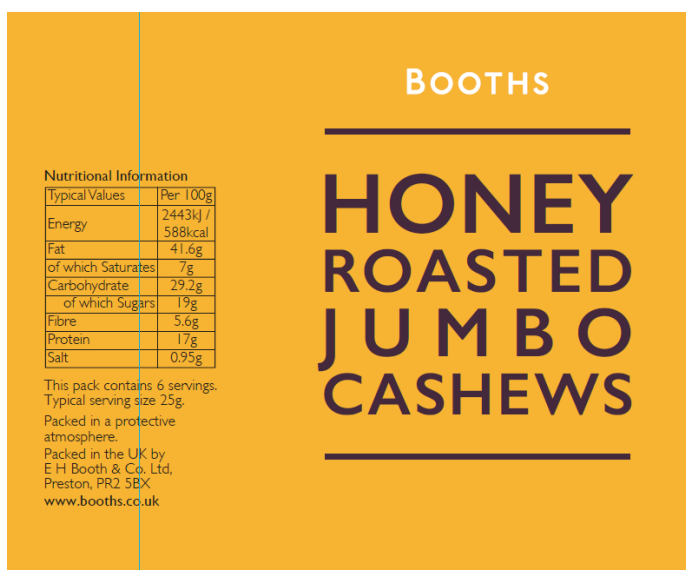
**Storage**  
Tea should be kept in a cool, dark, dry container that is airtight.  
Suitable for Vegetarians and Vegans.

This product should reach you in perfect condition. If it does not, please return to Customer Services at your nearest Booths store.  
For Best Before End, see base of pack.

## Booths Italian Coffee



## Booths Honey Roasted Cashew Nuts



### ROASTED CASHEWS WITH HONEY

**Ingredients**  
Cashews (83%), Sugar, Sunflower Oil, Honey (1.5%), Salt, Glucose Syrup (**Sulphites**), Stabiliser: Xanthan Gum.

**Allergy Advice** For allergens, see ingredients in **bold**. Packed in a factory that also processes other allergens including peanuts.

**Warning** Small children can choke on nuts.

Suitable for Vegetarians.

**Storage** Store in a cool dry place.

150g e

## Booths Rioja Reserva (75cl)

**GRAN NORTE**  
**RESERVA 2010**  
**RIOJA**

DENOMINACIÓN DE ORIGEN CALIFICADA

Made from 100% Tempranillo grapes and matured for 2 years in oak barrels, this is an expressive and elegant Rioja. Medium bodied with smooth tannins, it is dominated by notes of ripe red fruit, currants and liquorice, rounded off with sweet notes of vanilla and spice.

**Product of Spain.** Embotellado en origen.

Bottled for E.H. Booth & Co. Ltd,  
Preston PR2 5BX UK, by  
La Rioja Alta, S.A. Labastida,  
España. R.E.N° 97-VI

Suitable for vegetarians.

**Allergy Advice**  
Contains Sulphites  
[www.drinkaware.co.uk](http://www.drinkaware.co.uk)

75cl e 13.5% vol

  
5 028440 060021 >

## Booths Pinot Grigio (75cl)

**PINOT GRIGIO**  
**DELLE VENEZIE**

INDICAZIONE GEOGRAFICA TIPICA

The mature vineyards of the Venetian region, in north east Italy, produce the Pinot Grigio grapes which are used to make this dry, refreshing wine.

**Tasting Notes**  
The dusky, pink-skinned grapes are harvested by hand in autumn and the finished wine is medium-bodied with gentle aromas of lemon, peach and baked apple. It has plenty of fresh, lively acidity and rounder underlying notes of orchard fruits, with enough richness to take it beyond the apéritif glass.

**We Recommend**  
Try it with poached salmon and seafood or match it with poultry roasted with lemon and herbs.

**Product of Italy**  
Bottled for E.H. Booth & Co Ltd, Preston PR2 5BX  
by A.V.P. S.C.A., Castel Boglione – Italia

Suitable for vegetarians and vegans.

**Allergy Advice**  
Contains Sulphites

75cl 12.5% vol 

  
5 028440 060083 >  
[www.drinkaware.co.uk](http://www.drinkaware.co.uk)

## Booths Tea Towel Blue

### Tea Towel

100% Cotton.

Wash before first use. Wash similar colours together.

Reshape whilst damp. Line dry only. Iron on low heat to reverse.



Warning: KEEP AWAY FROM FIRE.

This product should reach you in perfect condition. If it does not, please return to Customer Services at your nearest Booths store.

Batch Number: 14572

Produced in China for  
E H Booth & Co. Ltd,  
Longridge Road, Ribbleson,  
Preston, PR2 5BX  
[www.booths.co.uk](http://www.booths.co.uk)



## Booths Anglesey Sea Salt Thins



**BOOTHS**  
**MILK CHOCOLATE & ANGLESEY SEA SALT THINS**  
MADE IN LANCASHIRE FOR BOOTHS

**MILK CHOCOLATE FLAVOURED WITH SEA SALT**

**Ingredients** Sugar; Whole Milk Powder; Cocoa Butter; Cocoa Mass, Anglesey Sea Salt, Emulsifier: **Soya** Lecithin, Natural Vanilla Flavouring.

**Milk Chocolate** contains Cocoa Solids 35% minimum, Milk Solids 21% minimum.

**Allergy Advice** For allergens, see ingredients in **bold**. May contain nuts.

Suitable for Vegetarians.

**Storage** Store in a cool, dry place away from strong odours and sunlight.

**Nutritional Information**

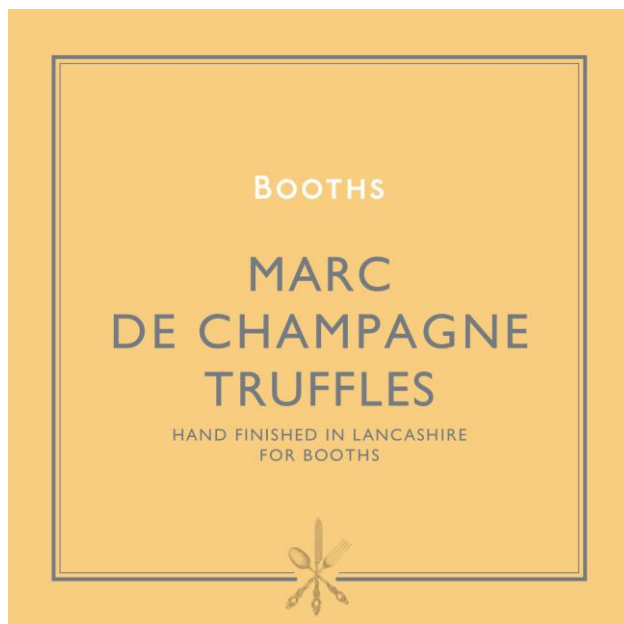
Typical Values	Per 100g	Per Chocolate
Energy	2313kJ / 553kcal	173kJ / 41kcal
Fat	34.9g	2.6g
of which Saturates	21g	1.6g
Carbohydrates	50.3g	3.8g
of which Sugars	49.1g	3.7g
Fibre	2.8g	0.2g
Protein	7.5g	1g
Salt	0.63g	0.05g

This product should reach you in perfect condition. If it does not, please return to Customer Services at your nearest Booths store.

Produced and packed in Lancashire for  
E H Booth & Co. Ltd  
Preston, PR2 5BX  
[www.booths.co.uk](http://www.booths.co.uk)

150g e

# Booths Champagne Truffles



**BOOTH'S**

## MARC DE CHAMPAGNE TRUFFLES

A MILK CHOCOLATE SHELL WITH A WHITE CHOCOLATE AND CHAMPAGNE CENTRE, ROLLED IN ICING SUGAR

**Ingredients** Milk Chocolate Shell (Sugar, Whole Milk Powder, Cocoa Butter, Cocoa Mass, Emulsifier: **Soya Lecithin**, Natural Vanilla Flavouring), Filling (White Chocolate (Sugar, Cocoa Butter, Whole Milk Powder, Emulsifier: **Soya Lecithin**, Natural Vanilla Flavouring), Marc de Champagne (3.5%), Whole Milk Powder, Invert Sugar Syrup, Humectant: Sorbitol, Emulsifier: **Soya Lecithin**), Decoration (Icing Sugar (Sugar, Dried Glucose Syrup)).

Milk Chocolate contains Cocoa Solids 35% minimum, Milk Solids 21% minimum.

**Allergy Advice** For allergens, see ingredients in bold. May contain nuts.  
Suitable for Vegetarians.

9 truffles  
100g e

5 028440 445323 >

**Nutritional Information**

Typical Values	Per 100g	Per Truffle
Energy	2202kJ / 526kcal	264kJ / 63kcal
Fat	32.4g	3.9g
of which Saturates	20.1g	2.4g
Carbohydrates	48.6g	5.8g
of which Sugars	46.1g	5.5g
Fibre	1.8g	0.2g
Protein	6.4g	0.8g
Salt	0.20g	0.02g

**Storage** Store in a cool, dry place away from strong odours and sunlight.

This product should reach you in perfect condition. If it does not, please return to Customer Services at your nearest Booths store.

Produced and packed in Lancashire for E H Booth & Co, Ltd  
Preston, PR2 5BX  
[www.booths.co.uk](http://www.booths.co.uk)

**BEST BEFORE END**